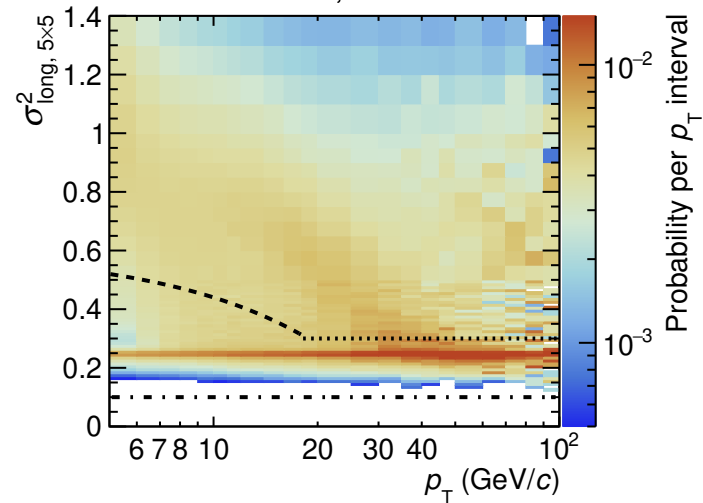
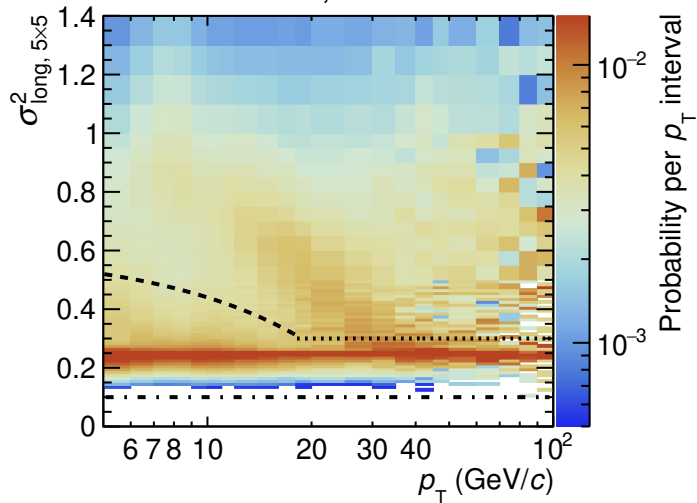


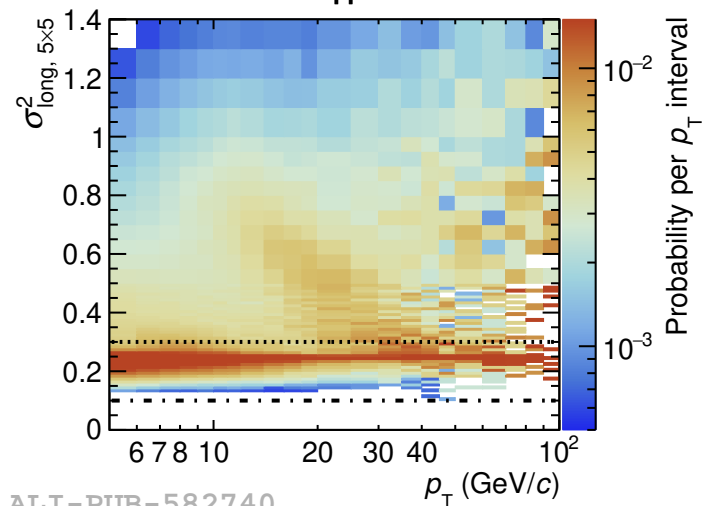
Pb-Pb, 0-10%



Pb-Pb, 30-50%



pp

ALICE, $\sqrt{s_{\text{NN}}} = 5.02$ TeV..... $\sigma_{\text{long}, 5 \times 5}^2 = 0.3$ ----- $\sigma_{\text{long}, 5 \times 5}^2 = 0.6 - 0.016 p_T$ - · - · $\sigma_{\text{long}, 5 \times 5}^2 = 0.1$